



EMORY
UNIVERSITY

Emory Global Diabetes
Research Center

of the Woodruff Health Sciences Center

Strategic Plan | FY23 - FY27



1518 Clifton Road NE
Atlanta, GA 30322 USA
www.diabetes.emory.edu
egdrc@emory.edu

Center Overview

Diabetes is a major global and national health challenge affecting 537 million people worldwide, including 37 million in the United States. It is a leading cause of rising health-care costs in the U.S. and globally.

Diabetes represents an inter-disciplinary challenge, as its solutions call for collaboration across basic, clinical, and public health sciences, with attention to interacting biological, environmental, and socio-economic factors. The Emory Global Diabetes Research Center (EGDRC) seeks to foster convergence science and interdisciplinary approaches to address diabetes burdens locally and globally. Formed in 2008, the EGDRC has grown to encompass more than \$200 million in extramural grant awards, greater than 150 affiliated faculty members, and collaborative partnerships across at least 25 countries.

Through its national and international collaborations, the EGDRC has built a world-class global diabetes research infrastructure, bilateral training programs, and engaged in policy and advocacy. EGDRC is unique in its seamless integration of domestic and international efforts, building a broad and comprehensive research and training ecosystem for solving the challenge of diabetes.



EMORY
UNIVERSITY

**Emory Global Diabetes
Research Center**

of the Woodruff Health Sciences Center

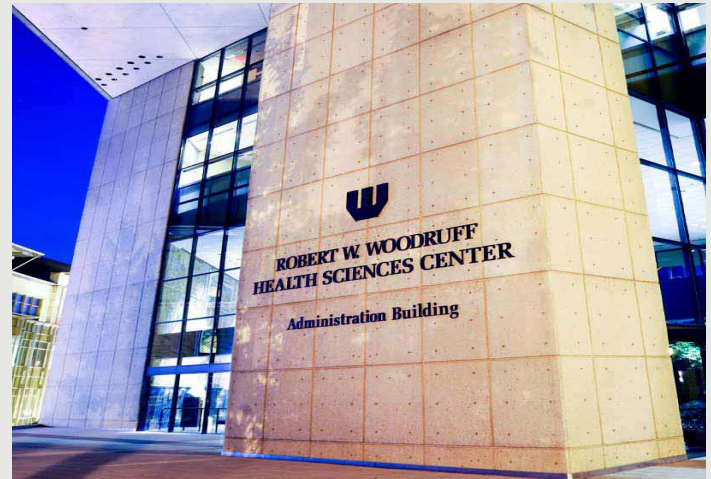
Planning Charge and Process

In early 2022, the Emory Global Diabetes Research Center, in recognition of its university-wide impact, was elevated to a Woodruff Health Sciences Center (WHSC) component unit, taking its place among other high-impact WHSC centers, including the Winship Cancer Institute and the Emory National Primate Center. With its elevated, cross-campus status, the EGDRC benefits from increased institutional resources and increased visibility.

This pivotal moment led the EGDRC to produce an aspirational and visionary strategic plan setting the direction for the next five years of growth and investment. In determining the future direction for the EGDRC, external interviews were conducted with diabetes research experts around the world. A steering committee composed of center members met over the course of six months to produce a vision statement, to identify science domains for prioritization, and to set high level strategies to guide the next phase of the strategic plan development.

Throughout the summer of 2022, four faculty-led workgroups, each assigned to one of the science domains, established priorities for specific research topics, faculty recruitment, and center infrastructure development. The steering committee finalized the strategic plan.

With strong and deliberate alignment to broader Emory University and Woodruff Health Sciences Center strategic priorities, the strategic plan positions EGDRC to expand its influence in the domestic and global diabetes



research communities by pursuing new and cutting-edge directions while advancing and strengthening its current research portfolio. Most plan priorities are bold concepts that will require multi-year commitments and extensive resourcing for success.

The strategic plan is summarized in this document. A detailed set of action plans and priorities was also developed to execute the implementation of the plan.



EGDRC Strategic Framework

Vision

Improving the lives of people and populations through interdisciplinary diabetes research.

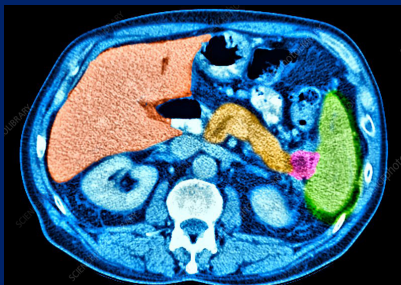


Scientific Domains

- Public health sciences, health equity, and policy
- Precision diabetes, technology, big data, and artificial intelligence
- Translational and implementation sciences
- Etiology, pathophysiology, and basic sciences

Plan Metrics

- Extramural grant awards and gifts
- Center membership headcount
- Underrepresented minority membership headcount
- Network of partners
- Publications and citations
- Members' awards and recognition nationally and internationally



EGDRC Strategic Framework



Strategies

- Leverage areas of scientific expertise and differentiators
- Invest in leading-edge research themes
- Recruit, develop, and retain high-caliber faculty across academic disciplines
- Enhance our Center support services and infrastructure
- Secure and advance external partnerships domestically and globally
- Train the next generation of diabetes researchers
- Foster an interdisciplinary and collaborative culture among faculty, staff, and trainees
- Pursue institutional, philanthropic and other extramural funding

Initial Plan Priorities and Investment Opportunities

Research Focus Areas

- National and international cohorts and large datasets
- Molecular and pancreatic biology, brain-gut-endocrine axis
- Personalized and precision medicine and prevention
- Emerging technology and use of technology, including artificial intelligence
- Translation and implementation across settings and populations
- Behavioral economics
- Health equity and community-engaged research
- Health geography, environment, and climate change

Recruitment Focus Areas

- Fundamental biological sciences and multiomics
- A.I. humanity and big data analytics
- Economics and policy
- Translation and implementation



Strategic Planning Committee



K. M. Venkat Narayan
Executive Director, EGDRC



Mohammed K. Ali
Co-Director, EGDRC



Manoj Bhasin
Emory School of Medicine



Francisco Pasquel
Emory School of Medicine



Suchitra Chandrasekaran
Emory School of Medicine



Shivani Patel
Rollins School of Public Health



Solveig Cunningham
Rollins School of Public Health



Guillermo Umpierrez
Emory School of Medicine



Sandra Dunbar
School of Nursing



Mary Beth Weber
Rollins School of Public Health



Saria Hassan
Emory School of Medicine

Strategic Planning Leads:



Joyce Ho
Emory College



Whitney Robinson
Woodruff Health Sciences Center



Mark Hutcheson
Managing Director, EGDRC



Haylee McBrayer
Woodruff Health Sciences Center

